

Rigger Assist

A Perfect Lift Every Time



Incorrectly Depicted Crane Loads Increases Risk of Accidents

- ⚠ Injuries and/or Deaths
- ⚠ Lost Time
- ⚠ Company Reputation
- ⚠ Insurance Premiums
- ⚠ Compensation Claims
- ⚠ Plant Damage

Improving Lift Outcomes

Incorrectly plumbed hook from load to boom head causes load swing.

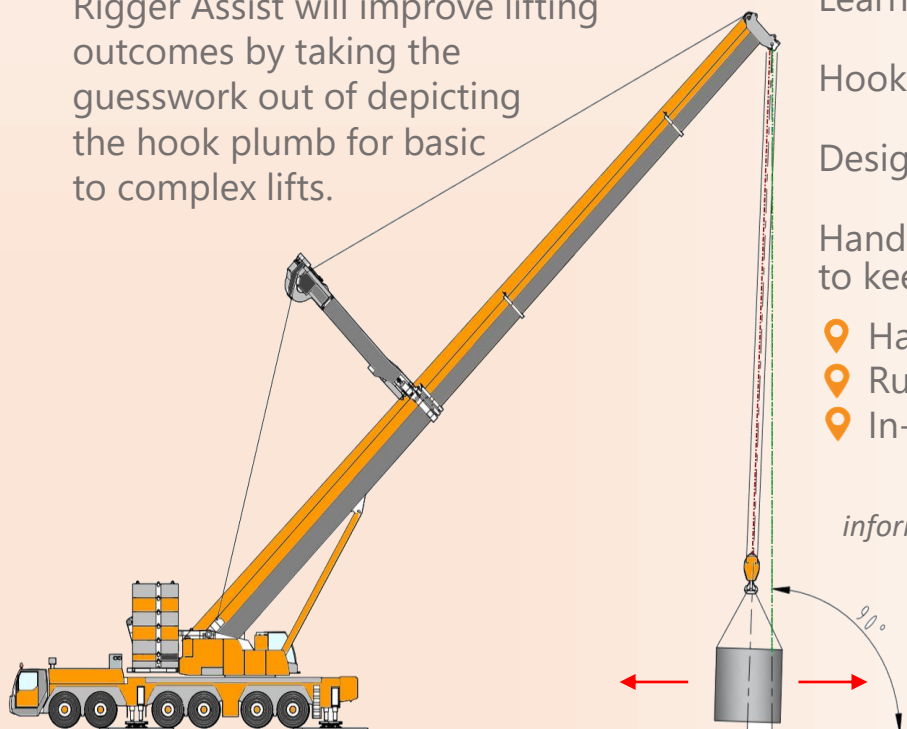
Operator difficulty in catching hook.

Experienced Riggers usually depict hook 'plumb' but lift issues can happen due to:

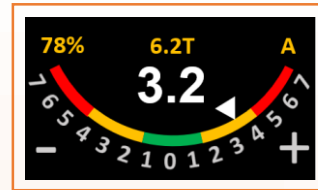
- 📍 Difficult loads,
- 📍 High booms,
- 📍 Visual obstruction,
- 📍 Site topology

Trainee Dogman / Rigger can get plumb alignment wrong for even simple lifts.

Rigger Assist will improve lifting outcomes by taking the guesswork out of depicting the hook plumb for basic to complex lifts.



Introducing Rigger Assist



Precision lifting with patented hook verticality measuring device

Real-time electronic plumb correction interface

Enhanced decision making for the Operator and Dogman / Rigger

Learning aid for trainees

Hook twist compensation

Designed for Australian conditions

Hands free display allows Rigger to keep eyes on the load. Options:

- 📍 Hard hat Heads-Up-Display
- 📍 Rugged Smart-Glasses
- 📍 In-cabin Display

With Rigger Assist, you have the information needed to setup and direct the load faster, safely and efficiently.

**Buildvation
Pty Ltd**

*Making cranes safer
and smarter*



For more information: www.buildvation.com
or contact us at: info@buildvation.com